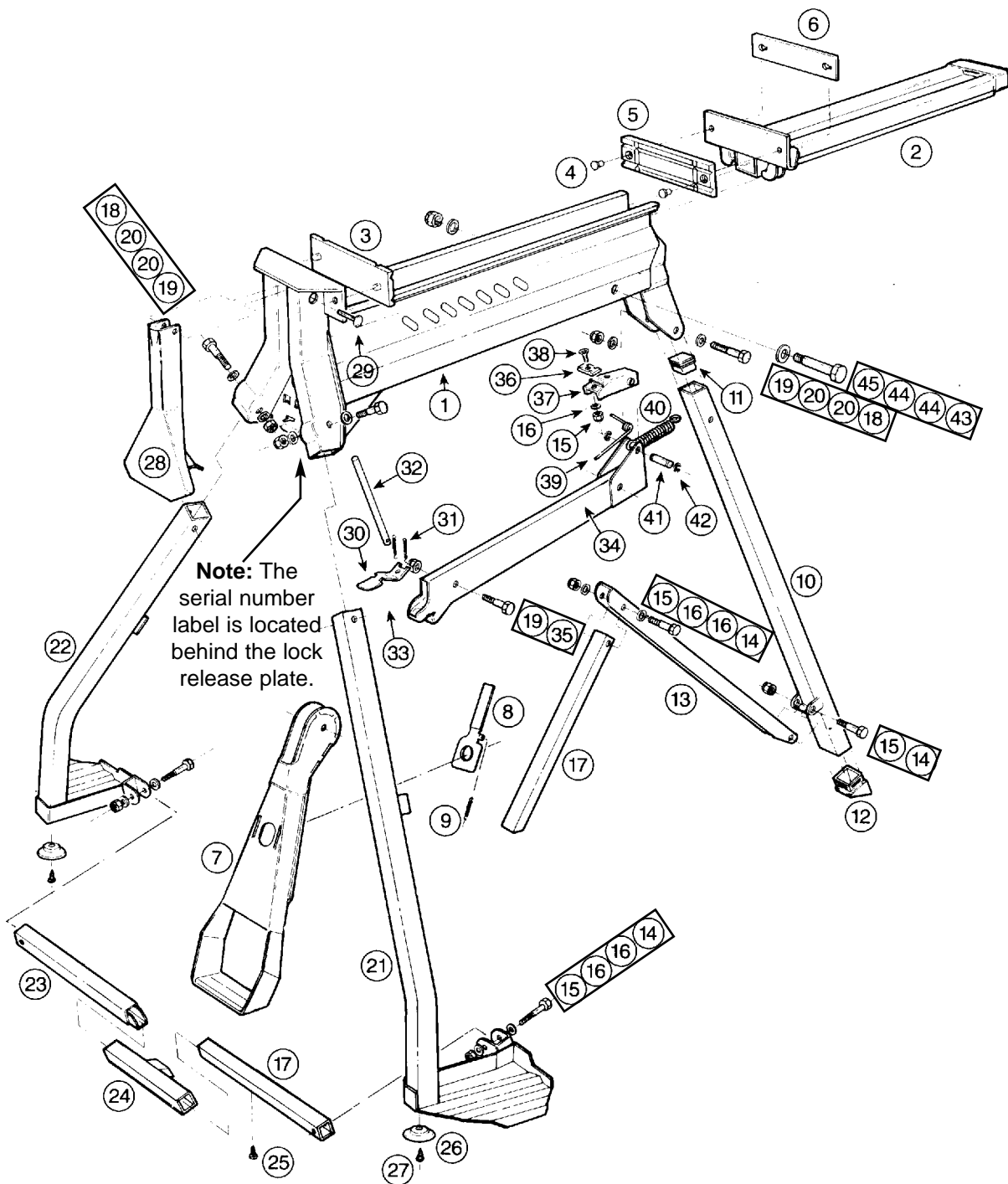


Superjaws - SJA001

Portable workstation / vice. Introduced January 1992.



Earlier model Superjaws (Jan '92 - March '95) differed slightly to the above diagram. The improvements and dates of change are as follows:

1. A urethane jaw facing (3) was fitted to the rear of the moving jaw. From 1/9/94 - Serial Number 32675
2. The main body (1) had angled slots pierced in the sides. From 1/12/93 - Serial Number 27581
3. The pedal lock ring (8) was fitted to the rear of the foot pedal. (This part cannot be fitted to earlier pedal assemblies). From 23/3/95 - Serial Number 36929
4. Rubber feet were added (27). From 1/6/94 - Serial Number 30074
5. The lock shaft (32) was secured by a roll pin (33) instead of a split pin. From 11/8/93 - Serial Number 24471
6. The roll pin (33) was replaced by a ball and socket joint at the end of the pedal arm. From 11/11/96 - Serial Number 46172.

Superjaws - SJA001

Portable workstation / vice. Introduced January 1992.

Diag. Part No. Ref.	Description	Diag. Part No. Ref.	Description
- PUA133	Packing Carton	23 SJA157	Front Leg Spreader
- PUA186	Instruction Manual	24 SJA161	Joiner
1 SJA002	Main Body	25 CSA158	Stop Screw
2 SJA022	Sliding Jaw	26 SJE007	Rubber Foot
3 SJA027	Urethane Facing (Front Jaw)	27 CSA136	Screw
4 SJA136	Locating Pins	28 SJA060	Lock-release Plate
5 SJA129	Urethane Facing (Sliding Jaw)	29 CSA160	Headed Pin
6 SJA127	Rear Urethane Facing (Sliding Jaw)	30 SJA057	Lock Pawl
7 SJA142	Foot Pedal	31 SJA059	Lock Pawl Spring
8 SJA140	Foot Pedal Lock Bar	32 SJA050	Lock Shaft - up to Serial No. 46171
9 SJA141	Foot Pedal Lock Bar Spring	32 SJA185	Lock Shaft - from Serial No. 46172
10 SJA064	Rear Leg	33 CSA107	Roll Pin M3 x 25mm
11 CPA013	Tube Closer, Flat	34 SJA029	Pedal Arm
12 SJE006	Tube Closer, Angled	35 CSA097	M8 x 35mm Bolt
13 SJA069	Leg Spreader Channel	36 SJA043	Drive Pawl
14 CSA100	M6 x 40mm Bolt	37 SJA040	Pawl Carrier
15 CSA090	M6 Nyloc Nut	38 CSA087	Countersunk Bolt
16 CSA088	M6 Flat Washer	39 SJA045	Pawl Carrier Spring
17 SJA154	Rear Leg Spreader	40 SJA046	Pedal Return Spring
18 CSA101	M8 x 45mm Bolt	41 SJA044	Pawl Carrier Pivot
19 CSA098	M8 Nyloc Nut	42 CSA091	Circlip
20 CSA099	M8 Flat Washer	43 CSA094	M12 x 65mm Bolt
21 SJA091	Front Leg, RH	44 CSA096	M12 Flat Washer
22 SJA074	Front Leg, LH	45 CSA095	M12 Nyloc Nut

SERVICE REPAIR KITS

SJA188	Lock shaft, lock pawl & springs	Comprises parts 30, 31 & 32
SJA189	Replacement set of urethane jaw facings	Comprises parts 3, 4, 5 & 6

Specifications:

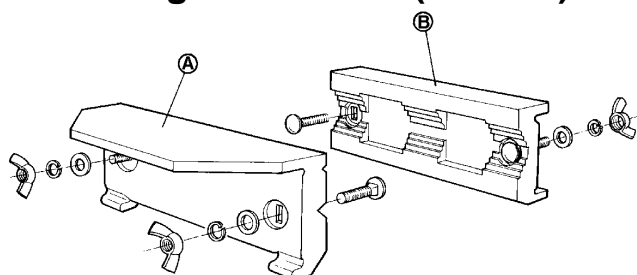
Packed weight: 21.90kg

Pack Size: 775 x 370 x 310mm **Volume:** 0.085m³

Paint: Epoxy powder coat (oven cured) **Main Body:** Telecom Gold

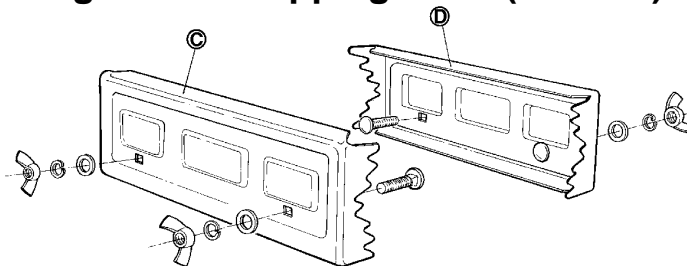
Legs : Charcoal Grey

Cast Engineers Jaws (SJA118)



Ref. Part No.	Description
- PUA147	Packing Carton
A SJA119	Front Jaw with Anvil
B SJA121	Rear Jaw
- SJA133	Hardware Pack

Log & Pole Gripping Jaws (SJA130)



Ref. Part No.	Description
- PUA148	Packing Carton
C SJA131	Log Jaw
- SJA133	Hardware Pack

Specifications:

Packed Weight: 2.41kg

Pack Size: 194 x 74 x 72mm

Volume: 0.001m³

Specifications:

Packed Weight: 1.58kg

Pack Size: 268 x 107 x 43mm

Volume: 0.001m³